

**emoko**

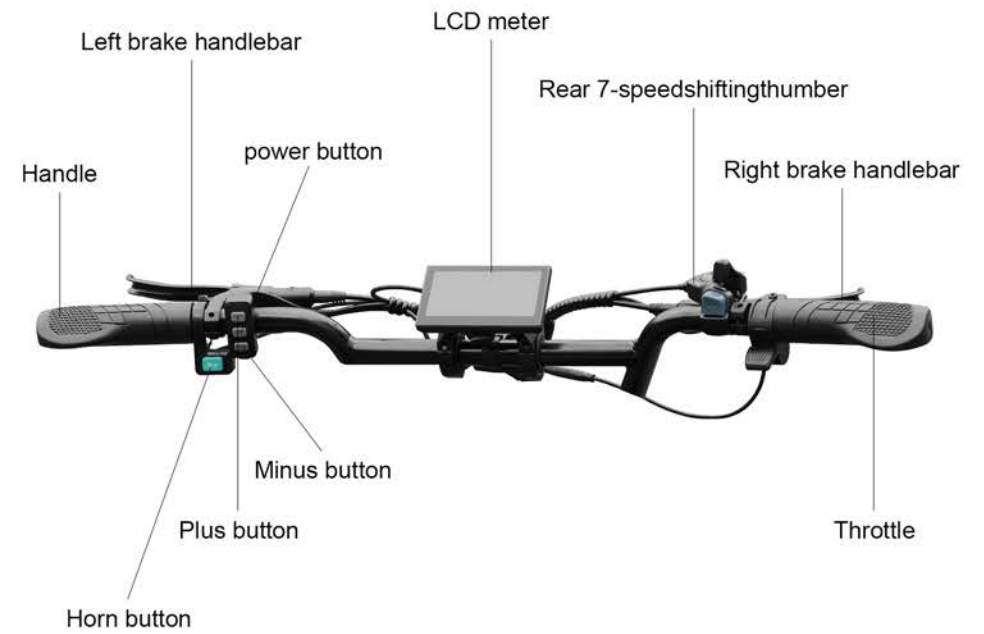


<https://emoko-scooter.com>

**C93**

CAUTION READ THIS MANUAL BEFORE USING YOUR EQUIPMENT

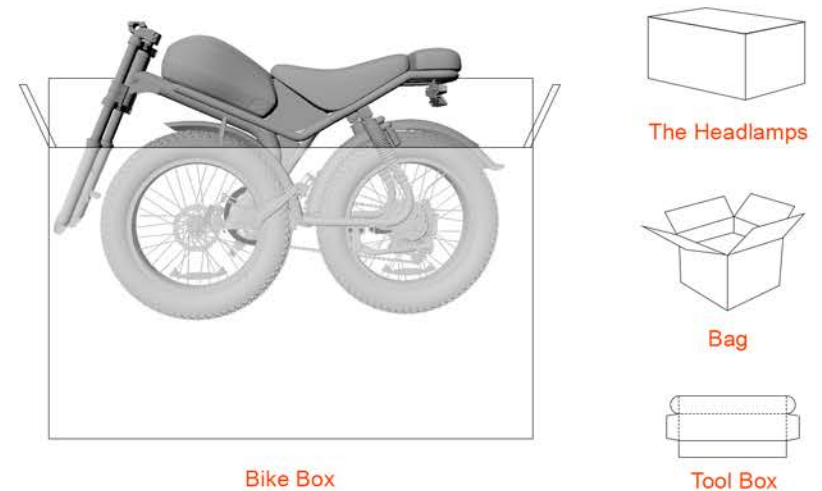
### Bike Components



Performance index	Project	C93
Basic Parameters	Vehicle Size	1730*70*1135
	Wheel Size	20Inches
	Body Material	Aluminium alloy
	Maximum Load	396LBS(180KG)
	Vehicle Weight	92.5LBS(42KG)
Main Parameters of the Whole Vehicle	Maximum Speed	31MPH(50KMH)
	Maximum Gradient	10°-30°
	Rear Derailleur	7-Speed
	Mileage Range	56miles(90KMH)
	Working Temperature	23°F-95°F(-5~35)
Battery Parameters	Rated Voltage	48V
	Battery Capacity	20AH
	Service Life	500 Times
Motor Parameters	Motor Power	1000W
	Motor Type	Brushless Gear Motor
	Maximum Torque	55Nm
Charger Parameters	Input Voltage	100-240V
	Output Voltage	54V
	Output Current	2A

Tools: Scissors or other suitable cutting tools

- (1) Remove and recycle all wrapping materials. (Keep the box and tool kit for future use.)
- (2) Take out all items from the carton, including the bike, tool kit, and other accessories (e.g. pedals, charger, etc.)
- (3) Use scissors or other tools to detach the front wheel, then carefully remove all foam packaging from the bike.





Multi-Purpose Hex Key



17-19mm Wrench



15-17mm Wrench



12-14mm Wrench



L Shaped Perforated Hex Socket



6mm Hex Key



5mm Hex Key



4mm Hex Key



3mm Hex Key



2.5mm Hex Key



Phillips Screwdriver



Charger

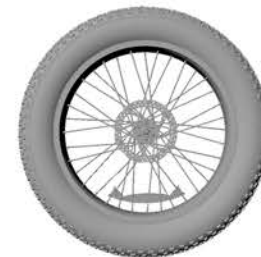


Bicycle Pedals

(1) Take out the front wheel.



(2) Remove the foam from both sides of the front wheel.

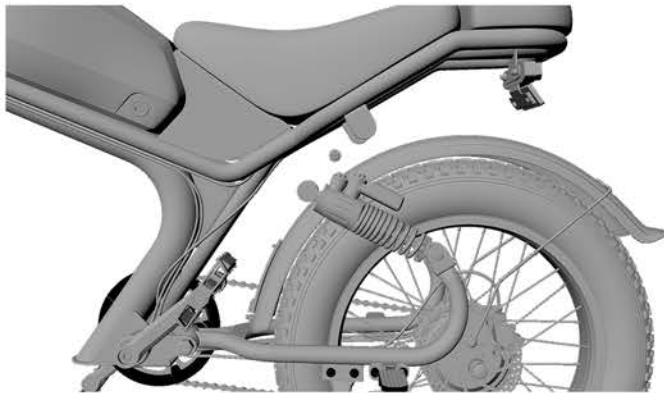


## Install the Left and Right rear spring suspensions



Tools: 12-14mm & 15-17mm Wrenches

- (1) Remove the screw from the suspension mounting hole.
- (2) Align the spring suspension with the mounting port and insert the screw.
- (3) Tighten the screw using both wrenches to secure.



## Install the handlebar



Tools: 6mm Hex Key

- (1) Place the handlebar at an appropriate position, make sure the "cross symbol" is located at the center.
- (2) Use a 6mm hex key to install the 4 bolts by turning clockwise. The sequence is shown in the picture above. Please do not fully tighten them yet.
- (3) Once the bolts and the handlebar are in the right place, tighten the bolts fully with appropriate force.



## Install the fender



Tools: 4mm Hex Key, Cross Screwdriver, Socket Wrench

- (1) Carefully turn the bike upside down.
- (2) Remove the protective foam wrapping and use tools to detach the center support bar.
- (3) Use a 4mm hex key to secure both sides of the fender.
- (4) Use a cross screwdriver and socket to fasten the top part of the fender.



## Install the front wheel



**The shaft sleeve and gasket shall be installed according to the picture.**

Tools: Multi-function Wrench

- (1) Important: Ensure everything is correctly aligned.
- (2) Place the front wheel between the fork.
- (3) Lock the axle securely with the wrench. (The shaft sleeve and gasket shall be installed according to the picture.)

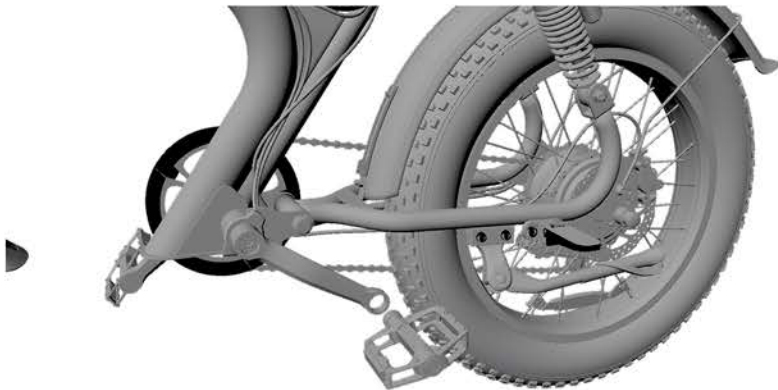


## Install the Pedals



Tools: 15-17mm & 17-19mm Wrenches

- (1) Identify the "R" (Right) and "L" (Left) pedals.  
(R goes on the side with the belt. L goes on the opposite side.)
- (2) Install the L pedal by turning counterclockwise.
- (3) Install the R pedal by turning clockwise.
- (4) Tighten both pedals with a wrench.

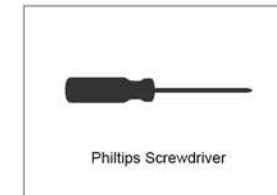


## Install the Rear Seat and Rear view Mirrors



Tool: Cross Screwdriver

- (1) Upright the bike and ensure it is stable.
- (2) Position the rear seat in the designated area.
- (3) Use the cross screwdriver to tighten the screws and secure the seat.
- (4) Attach both mirrors securely to the handlebar.



## Install the Front Light



Tools: 12-14mm Wrench

- (1) Adjust the light bracket on the front fork.
- (2) Remove screws and rubber washers from the light.
- (3) Attach the light to the frame with rubber washers in between. Tighten all screws.

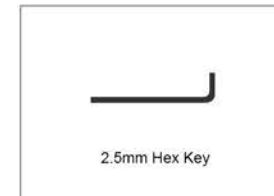


## Fix the Display



Tools: 2.5mm Hex Key

- (1) Rotate the display to a visible position.
- (2) Secure it using the hex key.



- (1) Turn on the bike and make sure all components work properly.
- (2) Confirm the the display, lights, and functions operate normally.

### 1.1 Function overview

- Display C93 provides a variety of functions to meet the riding needs of users, including:
  - Battery level indicator
  - Assist level adjustment and indication
  - Headlight indicator
  - Speed indicator (including real-time speed, maximum speed (MAXS) and average speed (AVG))
  - Distance indicator (including ODO and trip distance (Trip))
  - Error code indicator
  - Bluetooth connection indicator (reserved)
  - Parameter setting function

### 1.2 Functional area layout



### 1.3 Button definitions

There are four buttons on the operating unit of display C93,i.c.,

The on/off button Function button Plus button Minus button

## 2.General operation

### 2.1 Power on/off

By pressing and holding the button , the display will start to work and the working power supply of the controller will be turned on.

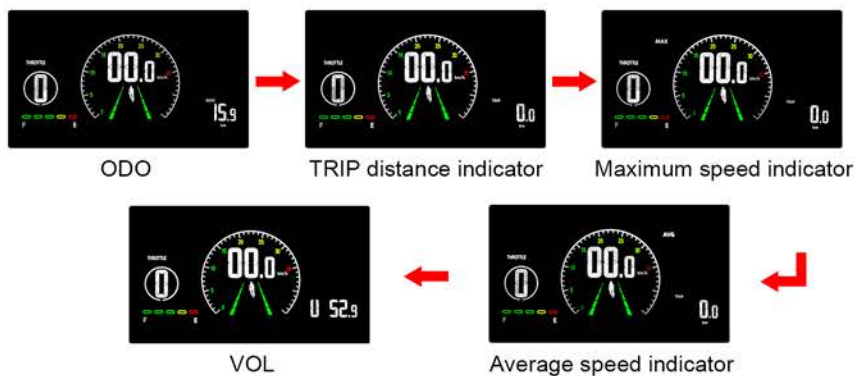
In the power-on state, by pressing and holding the button , your e-bike will be powered off. In the power-off state, the display will no longer use the battery power, and its leakage current will be less than 1uA.

- If your e-bike is not used for more than 10 minutes, the display will be automatically powered off.

### 2.2 Display interface

After the display is turned on, the display will show the real-time speed (km/h) and the trip distance (km) by default, By pressing the button the information displayed will be switched between the trip distance (km),ODO (km), maximum speed (km) and average speed (km).

- When the distance reaches 9999.9 km, it will be automatically reset to zero.



### 2.3 Front Light on/off

By pressing and holding the button , Headlights on.

By pressing and holding the button again, Headlights off.

### 2.4 Push assistance

By pressing and holding the button , the electric push assistance mode will be enabled. Your e-bike will run at the constant speed of 6km/h. The display will show

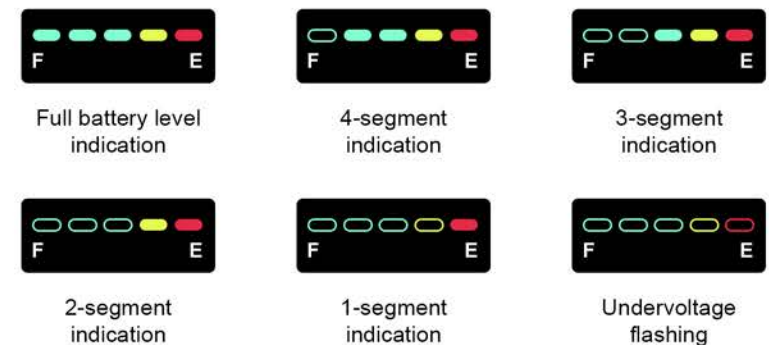
By releasing the button,your e-bike will immediately stop power output and return to the state before push assistance.

### 2.5 Assist level selection

By pressing the button , the e-bike assist level will be switched to change the motor output power. The assist By pressing the button levels available for the display include: levels 1 - levels 5.

### 2.6 Battery level indicator

The battery level indicator consists of five segments. When the battery is fully charged, the five segments will be all on.In case of under voltage, the outline of the battery indicator will flash, which means the battery has to be charge immediately.



## 2.7 Ebike Remove / Restriction Speed

Remove Speed: Unplug and replug the connector of this under the seat

Restriction Speed: Unplug the connector to relimited it again.

## 3.General setting

All parameters can only be set when your c-bike stops.

The steps for general setting are as follows:In the power-on state, when the display shows the speed of 0,






### 3.1 Trip distanee reset

### 3.2 Factory reset

## 4.Customer setting

All parameters can only be set when your ebike stops.

The steps for general setting are as follows:In the power-on state, when the display shows the speed of 0,

- (1) By pressing and holding the button , Enter the password 9999 to enter the parameter setting interface. Refer to (2) and (3) for input method.
- (2) In setting mode, Press the button  switch the setting menu.
- (3) Press the button   to increase or decrease the setting value.
- (4) By pressing and holding the button  again, Save the settings and exit setup.

### 4.1 P01: Display brightness

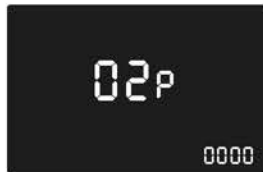
Brightness levels: 1 (dimpest) to 3 (brightest, default)



Display brightness

## 4.2 P02: MPH / KMH switch

"0"KMH, "1"MPH. Default:KMH



MPH / KMH switch

## 4.3 P03: Voltage level

Voltage level: 36V / 48V(Default)

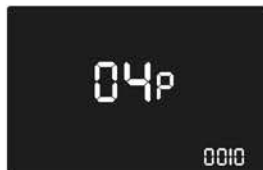
Switching is not recommended and will cause the bike to not work properly.



Voltage level

## 4.4 P04: Ebike dormant

Sleep time: 0-10,0 means no sleep; other numbers indicate sleep time, default is 10 minutes



Ebike dormant

## P05: Assistance level: 3 gears / 5 gears



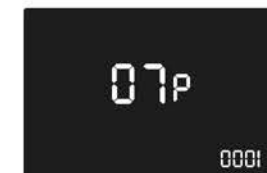
Assistance level: 3 gears / 5 gears

## P06: Wheel diameter setting: Adjustable from 0 to 30.5, default is 26. Unit: inches.



Wheel diameter setting: Adjustable from 0 to 30.5, default


## P07: Speed measurement setting: 1-255 (default: 1)





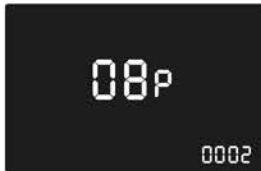
Speed measurement setting: 1-255 (default: 1)

## P08: Speed limit setting:

Speed levels: 1(20kmh), 2(25kmh,default), 3(99kmh).

After entering P08, By pressing and holding the button , wait for the password to appear 0000, then enter the password 8252 to adjust the speed limit value

(   adjust the numbers, the power button switches the digits. Only when the correct password is entered can you enter the P08 menu for adjustment ).



Speed limit setting

## P09: Zero-start setting:

0: Zero-start enabled

1: Zero-start disabled

Default: 0



Zero-start setting

## P10: Drive Mode Setting:

0: Pedal Assist (Output power is determined by the assist level; throttle is disabled).

1: Throttle Drive (Powered by throttle; assist levels are disabled).

2: Hybrid Mode (Both pedal assist and throttle drive work simultaneously, except throttle is disabled in zero-start conditions).

Default: 2



Drive Mode Setting

## P11: PAS Setting:

Range: 0-24 (Higher values = more responsive)

Default: 1

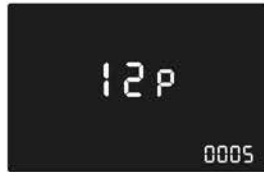


PAS Setting

P12: Assist Start Strength Setting:

Range: 0–5 (Higher value = stronger initial boost)

Default: 5



PAS Setting

P13: PAS Magnet Disc Type Setting:

Options: 5 / 8 / 12 (poles)

Default: 12



PAS Setting

P14: Controller Current Limit Setting:

Range: 1–30A

Default: 15A



PAS Setting


P15: Controller Undervoltage Protection Setting:

Value: 40V (Default)



Controller Undervoltage Protection Setting

P16: ODO Reset Setting

Long-press the button  for 5 seconds to reset ODO (Trip Meter).



ODO Reset Setting

- How far full charge battery can go?That depends on the loading weight,road condition and battery capacity.But in the same condition,average speeds can continuous longer travelrange.
- When storing the battery for a longer time,(during winter time)it is important to placethe fully charged battery in a dry place.
- Attention:The battery should be re-charged once every 2-3 month when it is not used.
  
- Never try to open the battery.
- Only use the Emoko supplied battery.Do not use a battery from any other diferent product models.
- If the battery is damaged because it has been dropped somewhere or biking accident, there may be a risk of electrolytes leakage.Beware of chemical burns! And immediately stop using the damaged battery.
- Do not touch the battery without a cloth or gloves and make sure no acid touches your eyes..
- Do not store the batteryin temperatures above 95F or below 23° F.
- Do not allow the battery to run down completely before charging.charge the battery before storing the product.f the battery is completely empty,it may cause the battery to no longer charge.
- Charge a new battery for at least 4-6 hours before you use it in your product for the first time.Never charge the battery too long per time.Overheating or undercharging the battery may shorten battery life and decrease product run time.



### IMPORTANT:BATTERY DISPOSAL

- Battery must be recycled or disposed of in an environmentally sound manner.
- Do not dispose of the battery in a fire.The battery may explode or leak.
- Do not dispose of a battery in your regular household trash.

How far full charge battery can go?That depends on the loading weight,road condition and battery capacity,But in the same condition,average speeds can continuous longer travel range.

- You can charge the bike directly,or you can remove the battery for charging.
- The RED light indicates it is in charging and GREEN light indicates the battery is fully charged.(Please put off plug from wall)Usually the charging time is 4-6 hours depends on the battery capacity remain.

### WARNING:

- Charging time over 10 hours is prohibited please kept it away from high temperature environment and stores it in a cool place.
- Please make sure that the battery charger and charging plug are always kept dray and never get wet.
- The charger should only be cleaned with a dry cloth.Never use a wet cloth,oil or any other liquid.
- Do not connect positive and negative terminals.
- Stop the charging procedure immediately if you notice anything unusual.
- It is strictly forbidden to cut the battery charging and discharging lines.
- It is strictly forbidden to disassemble the battery box or modify the internal structure and protection board of the lithium battery.
- Only use the Emoko supplied charger.Do not use a charger from any other different product models.
- After using the battery,please charge it within 12 hours.  
If the product has problems with the following forms during the protection period,we will provide customer service as part of the product quality guarantee.

- How far full charge battery can go? That depends on the loading weight, road condition and battery capacity. But in the same condition, average speeds can continuous longer travel range.
- When storing the battery for a longer time, (during winter time) it is important to place the fully charged battery in a dry place.
- Attention: The battery should be re-charged once every 2-3 month when it is not used.

**WARNING:**

- Keep the battery out of reach for children.
- Never try to open the battery.
- Only use the Emoko supplied battery. Do not use a battery from any other different product models.
- If the battery is damaged because it has been dropped somewhere or biking accident, there may be a risk of electrolytes leakage. Beware of chemical burns! And immediately stop using the damaged battery.
- Do not touch the battery without a cloth or gloves and make sure no acid touches your eyes.
- Do not store the battery in temperatures above 95F or below 23° F.
- Do not allow the battery to run down completely before charging. Charge the battery before storing the product, if the battery is completely empty, it may cause the battery to no longer charge.
- Charge a new battery for at least 4-6 hours before you use it in your product for the first time. Never charge the battery too long per time. Overheating or undercharging the battery may shorten battery life and decrease product run time.

Accessories	Quality problem	Warranty period	Service content
Motor	Motor will not be able to use	1 Year	Free delivery of parts
Accelerator	Natural conditions (such as impact force cannot be used except damage)	1 Year	Free delivery of parts
Controller	Failure occurs under normal use	1 Year	Free delivery of parts
Charger	Failure occurs under normal use	1 Year	Free delivery of parts
Lithium Battery	Can't charge discharge under normal use	1 Year	Free delivery of parts

**Notes:**

If the above issues occur during the protection period, please contact us and send us photos or videos of the defective parts. If we confirm that the fault is caused by the quality of the product itself, we will send you the parts that are needed replaced for free.

**Year Limited Hardware Warranty**

Your Emoko Electric bike includes a One Year Limited Hardware Warranty. The Warranty covers product defects in materials and workmanship under normal use. This Warranty is limited to original purchasers. This Warranty starts on the date of your purchase and lasts for one year (the "Warranty Period"). The Warranty Period is not extended if the Product is repaired or replaced.

Warranty services are provided by the e-bike. If a hardware defect arises and a valid claim is received within the Warranty Period, at its option and to the extent permitted by law, ENGWE will resend new parts that are equivalent to new in performance and reliability. This Warranty is not assignable or transferable. The original purchaser may contact us for service request. This Warranty does not cover any damage due to: improper use; failure to follow the product instructions or to perform any preventive maintenance; unauthorized repair; external causes such as accidents, abuse, or other actions or events beyond our reasonable control.

**Any question about the item, please contact the customer service from where you brought your device.**